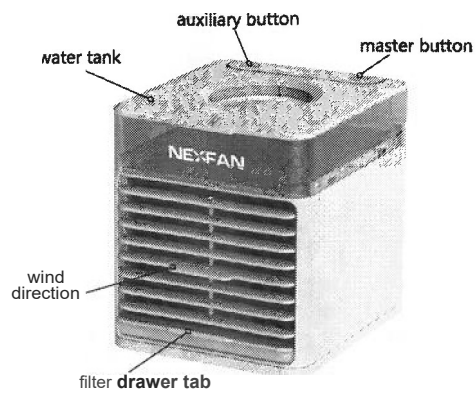
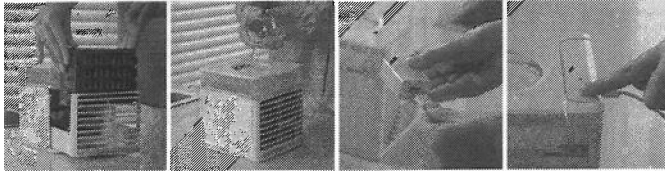




## Product Guide



## Installation



1. Pull out the filter drawer and remove the filter. Soak the filter in cold water and then put it back in place.

*Optional: The filter can be frozen in the refrigerator (only up to 30 minutes) after soaking in water, resulting in a greater cooling effect.*

2. Fill the NexFan water tank directly from the opening vent on the top of the Fan. (use ice water or ice cubes for better effects)

3. Plug in the USB cable to power and the micro USB end to the unit and start using.

## Usage



auxiliary button



master button

Press and hold the Master Button to Start/Power Off the Fan. Press the Master button to change the fan speed (High, Medium and Low).

Press the Auxiliary Button to turn the LED light ON. Press the button to choose from 7 colours.

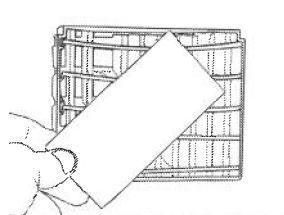
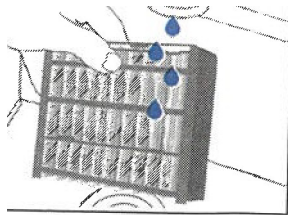
Double press the button to activate the Mist and UV-C. The blue light will indicate the UVC and Mist mode is active. To turn this mode off, double press the auxiliary button.

Note: Auxiliary and Master Buttons are touch sensitive. When starting the Nexfan, UV-C and Mist mode are set as default.

## Maintenance

Recommendation: Clean your Fan once a week and replace the filter every 10-12 months.

1. Carefully drain the water that is in the tank before cleaning.
2. If the water tank is dirty, use a small brush (toothbrush or bottle brush) to clean the unit carefully and then rinse with water.
3. Pull out the filter tray, take out the filter and remove the filter element. Wash It with warm soapy water and dry.



## Warning

- Always place the unit on a flat, dry surface.
- Place the unit on a raised surface such as desk, counter, table top for best cooling experience.
- This unit is not intended for use by persons (including children) with reduced physical, sensory or mental capabilities, or lack of experience and knowledge, unless they have been given supervision or instruction concerning use of the unit by a person responsible for their safety.
- This unit is not a *toy*. Please keep out of reach of children at all times.
- Allow the filter to absorb water for 3 minutes before usage and after filling the tank. This will allow cool air to disperse quickly.
- If not using the unit for an extended period, empty the water tank, turn unit on, set speed on high for 4 hours. This will dry out the filter and the inside of the unit for storage.
- Keep a minimum distance of 30cm from the Nexfan when using.
- Always unplug the unit when cleaning, moving or replacing.
- The unit will run for 8 hours approx. on a single fill on low speed.
- If the water tank is empty, the unit will still be cool *if* the filter is damp.
- Do not carry the unit when it is filled with water. There may be water remaining in the tank even if the unit is empty.
- Do not use in polluted environments/areas
- Do not place liquids on external areas of the unit.
- If the unit leaks or spillage occurs, unplug the unit and let it air dry for 24 hours. Once dry use as normal.
- Do not place the unit in direct sunlight.
- Use parts and accessories provided *only*, do not insert foreign objects into the unit.
- Do not handle the unit with wet hands.
- Do not place the unit around heaters, flammable liquids, electrical equipment, open flames, fire sources or gas.
- Do not place the unit in passageways to avoid tripping or falling over the unit.
- Do not place items over the unit.
- Never cover or block the front and back grills of the unit.
- Do not turn the unit upside down.
- The unit can be switched off completely only when it is disconnected from the power supply.
- The manufacturer does not bear *any* responsibility or damage caused from failing to comply with these instructions.
- Do not stare directly at the UV-C light when opening the top panel.

### **Tips**

Please use the equipped USS cable only.  
Only use Nexfan replacement filters available from authorised resellers.

